

For more information



Email: ckw@locallink.ie
Tel: 1890 42 41 41 or 056 771 5912
Online: www.ringalink.ie



Operated by:
Local Link Carlow, Kilkenny and
Wicklow
Ring a Link, Unit 4,
Cillín Hill,
Kilkenny



Fares: Children under 5 years and holders of the
Free Travel Pass, travel **free of charge**
(Travel Pass must be shown to the driver)

| Fare Type | Single |
|--------------------|--------|
| Adult | €3 |
| Student (under 16) | €2 |



Our vehicles are wheelchair accessible
Please pre-book the day before travel

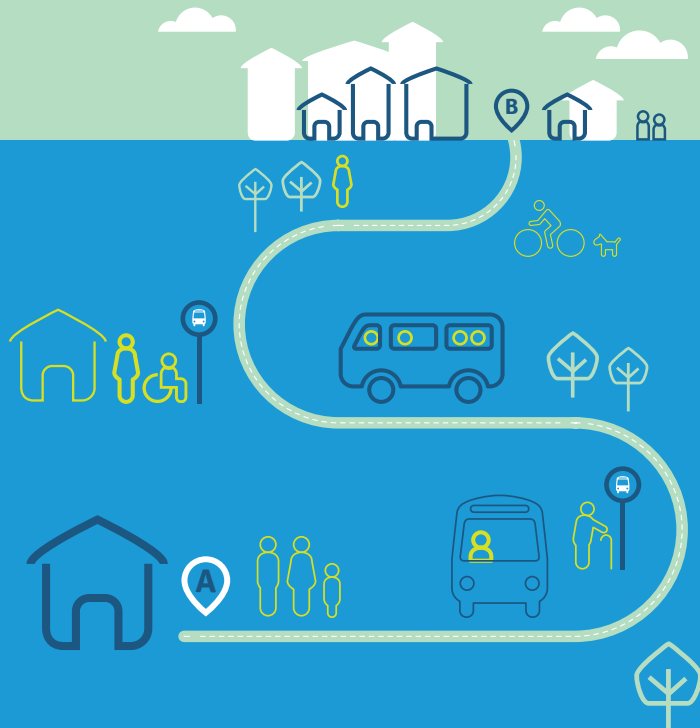
Services do **not** operate on Public Holidays

Information correct at the time of print: **January 2020**



local link

Carlow, Kilkenny & Wicklow



Dunlavin to Baltinglass

timetable



Timetable

Baltinglass - Dunlavin - Baltinglass

Days: Saturday Evening

| BALTINGLASS - BLATINGLASS | | |
|---------------------------|---------------------|--------|
| Departs | Stops | Friday |
| Baltinglass | McAllister Monument | 19:35 |
| Dunlavin | Centra | 20:00 |
| Donard | Moynihan's Pub | 20:10 |
| Knockanarrigan | Coolmoney Camp | 20:15 |
| Stratford-on-Slaney | The Stratford Arms | 20:20 |
| Tuckmill | Crossroads | 20:25 |
| Grangecon | Moore's Pub | 20:30 |
| Baltinglass | McAllister Monument | 20:40 |

| BLATINGLASS - BALTINGLASS | | |
|---------------------------|---------------------|--------|
| Departs | Stops | Friday |
| Baltinglass | McAllister Monument | 23:30 |
| Grangecon | Moore's Pub | 23:40 |
| Tuckmill | Crossroads | 23:45 |
| Stratford-on-Slaney | The Stratford Arms | 23:50 |
| Knockanarrigan | Coolmoney Camp | 23:55 |
| Donard | Moynihan's Pub | 00:00 |
| Dunlavin | Centra | 00:10 |
| Baltinglass | McAllister Monument | 00:35 |