

**TFI**

**TRANSPORT  
FOR  
IRELAND**



**The new BusConnects network is rolling out in the North-East of Dublin.**

## **Phase 1 Routes**

- H1** Baldoye - Donaghmede - City centre
- H2** Malahide - Carrickhill Road - Bayside - City centre
- H3** Howth - Bayside - City centre
- 6** Howth - St. Fintan's - Bayside - Watermill Road - City centre

**Launching 27th June 2021**



**Dublin Bus**

**Go-Ahead**  
Ireland



## The new BusConnects network

The new network follows from three rounds of public consultation which concluded in 2020. Once operational it will improve the existing Transport for Ireland (TFI) network by providing enhanced bus services with high frequency spines and new local, orbital and radial routes.

This new network will roll out on a phased basis over the coming years, starting with bus services in the North-East of Dublin.

Some of the many benefits of BusConnects include:

- **Increased capacity and frequency**
- **Increased evening and weekend services**
- **New sustainable fleet**

## Phase 1

Phase 1 involves the introduction of **H-Spine (H1, H2, H3, H9)** and **Route 6** (all operated by Dublin Bus).

- **H-Spine:**  
City centre to North-East suburbs including: Baldoyle, Donaghmede, Raheny, Malahide, Portmarnock, Howth and Kilbarrack.
- **Route 6:**  
Howth, St. Fintan's, Bayside, Watermill Road, City centre.

These new services will replace existing routes 29a, 31, 31a, 31b and 32.

## What's changing in this area?

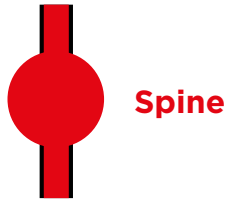
| Old Routes            | New Routes                                                                                                            |
|-----------------------|-----------------------------------------------------------------------------------------------------------------------|
| <b>29a</b>            | <b>H1</b> (Baldoyle - Donaghmede - City centre)                                                                       |
| <b>32</b>             | <b>H2</b> (Malahide - Carrickhill Road - Bayside - City centre) <b>102 and 32x*</b>                                   |
| <b>31 / 31a / 31b</b> | <b>H3</b> (Howth - Bayside - City centre)<br><b>6</b> (Howth - St. Fintan's - Bayside - Watermill Road - City centre) |

In addition, the new H9 service will operate in the AM peak along the H-Spine between St. Anne's Park (Howth Road) and the City Centre.

From **Sunday 27th June** the terminus for Route 130 will move from Lower Abbey Street to Talbot Street.

\*Routes 102 (operated by Go-Ahead Ireland) and 32x (operated by Dublin Bus) will now operate via Strand Road instead of Carrickhill Road and Wendell Avenue.





**Spine**

Spines are very frequent routes made up of individual bus services.



**Radial**

Other city bound services that operate into Dublin City centre.

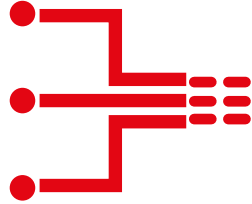
These services are not part of any Spine and operate to their own timetable.

### Spines:

**H1 H2 H3**

**H9** (H9 is AM peak times only Monday to Friday)

**H1 + H2 + H3 + H9 = H-Spine**



### Radial:

**6**



## Benefits of the BusConnects programme

BusConnects is the National Transport Authority's programme to greatly improve Transport for Ireland services in Irish cities. The programme will be rolled out over the coming years. In addition to increased capacity and enhanced frequency, other key benefits include:



**230km** of priority bus lanes making journeys faster and more reliable



**New bus stops and shelters** - with better signage and information



**New simplified** fares system



**New Park & Ride** facilities at key locations



**Low emissions** bus fleet



**200km** of cycle lanes/tracks

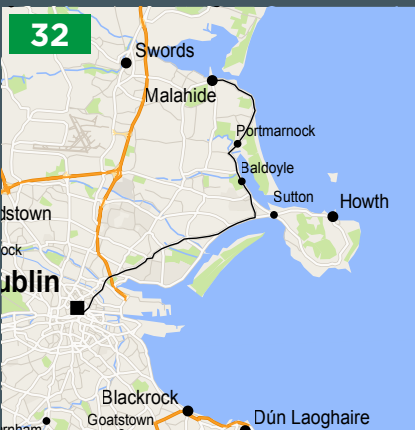
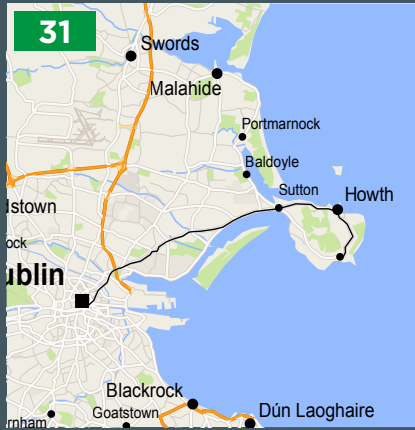
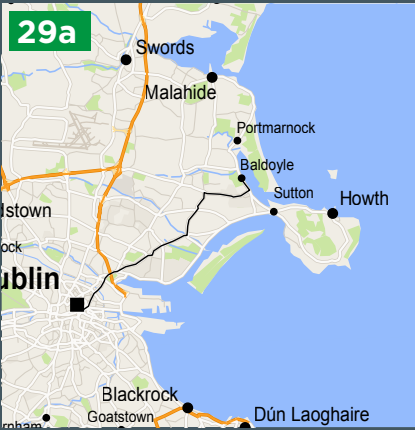
**New bus livery** providing a common style across all TFI operators





# Old Routes

# New Routes

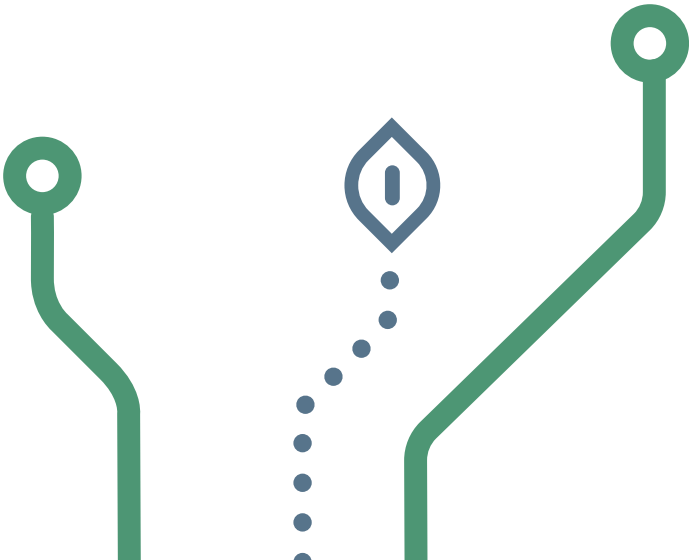




# Route 6 - Summary of stops served

- Stáisiún DART Bhinn Éadair  
Howth DART Station
- Mullach Bhinn Éadair  
Howth Summit
- Cill Fhionntain  
St. Fintan's
- Cill Fhionntain  
Sutton
- Cois Bá  
Bayside
- Bóthar Shéamaís Uí Lorcáin  
James Larkin Road
- Bóthar an Mhuilinn Uisce  
Watermill Road
- Bóthar na Naomh  
All Saints Road
- Bóthar Chnoc Shibéal  
Sybil Hill
- Cill Easra  
Killester
- Garrán an Chaisleáin  
Castle Grove
- Bóthar San Labhrás  
St. Lawrence Road
- Marino  
Marino
- Fionnradharc  
Fairview
- Bóthar an Phoirt Thoir  
East Wall Road
- Bóthar na Trá Thuaidh  
North Strand Road
- Sráid Amiens  
Amiens Street
- Stáisiún Uí Chonghaile  
Connolly Station
- Sráid na Mainistreach  
Iochtarach  
Abbey Street Lr

| Lá / Day                                    | Bealach / Route | Neamhchiníocht le linn an lae<br>Approx day-time frequency |
|---------------------------------------------|-----------------|------------------------------------------------------------|
| Laethanta le linn na seachtaine<br>Weekdays | 6               | gach 60 nóiméad / every 60 minutes                         |
| An Satharn<br>Saturday                      | 6               | gach 60 nóiméad / every 60 minutes                         |
| An Domhnach<br>Sunday                       | 6               | gach 60 nóiméad / every 60 minutes                         |





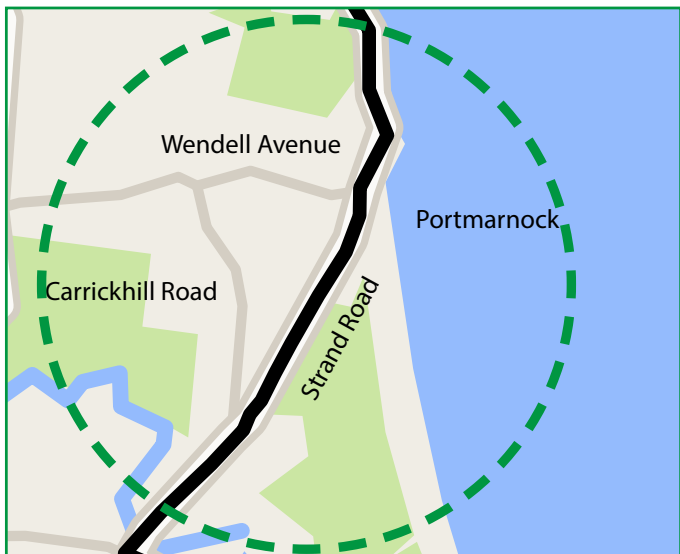
## Routes 102 and 32x

Routes 102 (operated by Go-Ahead Ireland) and 32x (operated by Dublin Bus) will now operate via Strand Road instead of Carrickhill Road and Wendell Avenue. The remainder of both routes will stay the same.

### Current



### New





**For more information please contact:**  
**Dublin Bus:**



**01 873 4222**



**customercomment@dublinbus.ie**



**www.dublinbus.ie**

### **Travel Assistance Scheme:**

The Travel Assistance Scheme is run by Dublin Bus on behalf of Transport for Ireland within the Greater Dublin Area. Its aim is to help customers use public transport on their own, especially those with disabilities and reduced mobility.

The scheme is open to all over the age of eighteen.

For further information on how to use the scheme call **(01) 703 3204** or email **travel.assist@dublinbus.ie**

**Get the apps:**



**National  
Journey  
Planner**



**Real Time  
Ireland**



**TFI Leap  
Top Up**

**www.transportforireland.ie**