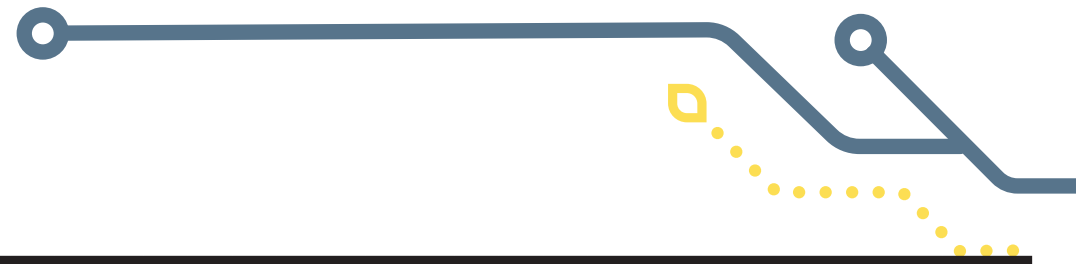


Frequency Guide: N4 & N6

There is a 10 minute frequency on both the N4 and N6 at most times on weekdays and Saturdays, with buses running every 15 minutes during the daytime on Sundays and every 20 minutes on Sunday evenings.

Route N4 also has an overnight service, running every 30 minutes on all nights of the week.



Weekdays

Route no.		AM						PM						AM										
		5	6	7	8	9	10	11	12	1	2	3	4	5	6	7	8	9	10	11	12	1	2	3
The number in each box below is the expected time in minutes between buses																								
N4	Blanchardstown Shopping Centre - Point Village	20	approx. every 10 minutes												15	30	30	30	30	30				
N6	Finglas - Howth Junction	20	approx. every 10 minutes												15	-								

Saturdays

Route no.		AM						PM						AM										
		5	6	7	8	9	10	11	12	1	2	3	4	5	6	7	8	9	10	11	12	1	2	3
The number in each box below is the expected time in minutes between buses																								
N4	Blanchardstown Shopping Centre - Point Village	20	15	15	15	approx. every 10 minutes						15	15	15	15	15	30	30	30	30	30			
N6	Finglas - Howth Junction	20	15	15	15	approx. every 10 minutes						15	15	15	15	15	15	-						

Sundays & Bank Holidays

Route no.		AM						PM						AM										
		5	6	7	8	9	10	11	12	1	2	3	4	5	6	7	8	9	10	11	12	1	2	3
The number in each box below is the expected time in minutes between buses																								
N4	Blanchardstown Shopping Centre - Point Village	30	30	30	20	20	approx. every 15 minutes						20	20	20	20	20	30	30	30	30	30		
N6	Finglas - Howth Junction	-	-	30	20	20	approx. every 15 minutes						20	20	20	20	20	30	-					

