

**TFI**

**TRANSPORT  
FOR  
IRELAND**



**The new BusConnects network is rolling out in the North of Dublin**

## **Phase 3 Routes**

**N4** Blanchardstown - Point Village via Collins Avenue

**N6** Finglas - Howth Junction via Beaumont Hospital

Launching 29 May 2022

 **Dublin Bus**

**Go-Ahead**  
Ireland 



## The new BusConnects network

The new network follows from three rounds of public consultation which concluded in 2020. It will improve the existing Transport for Ireland (TFI) network by providing enhanced bus services with high frequency spines and new local, orbital and radial routes.

This new network is being introduced on a phased basis over the coming years. The first two phases commenced in 2021. The next phase involves services in the North of Dublin serving areas including:

- Blanchardstown
- Finglas
- Ballymun
- Santry
- Glasnevin
- Donnycarney
- Killester
- Coolock
- Kilbarrack
- East Wall
- Beaumont Hospital
- DCU

Some of the many benefits of BusConnects include:

- Increased capacity and frequency
- Increased all day, night-time and weekend services
- Improved ticketing to allow for free interchange between services

## We are now entering Phase 3 of the Network Redesign

Phase 3, which commences on May 29, involves the introduction of Northern orbital routes N4 and N6.

The N4 will be operated by Dublin Bus. The N6 will be operated by Go-Ahead Ireland.

This will coincide with the removal of the following routes:

- 17a (Blanchardstown – Howth Junction) and
- 31d (Baldoye – DCU Helix)

## Fares

The TFI 90 Minute Fare now applies to most journeys in the Dublin area when using a TFI Leap Card. It includes the option to transfer for free between Dublin City Bus (Dublin Bus and Go-Ahead Ireland), Luas, DART and commuter rail (zones 1 to 4 in the Short Hop Zone). Just touch on your last journey within 90 minutes of the first.

TFI Leap Fares	Adult	Young Adult / Student	Child
Short Fare	€1.30	€0.65	€0.65
TFI 90 Minute Fare	€2.00	€1.00	€0.65

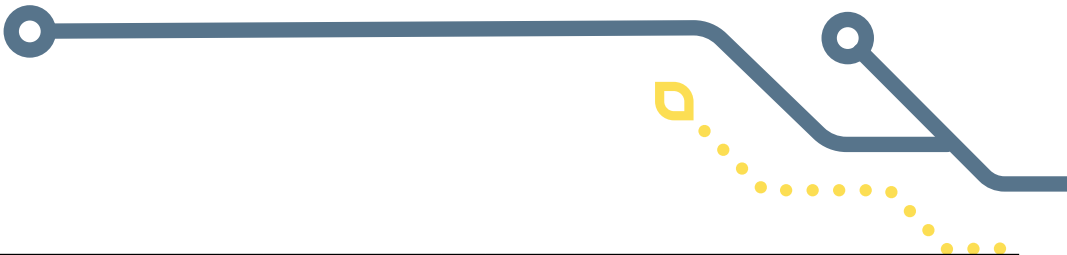
Fares apply until end of 2022.



# Frequency Guide: N4 & N6

There is a 10 minute frequency on both the N4 and N6 at most times on weekdays and Saturdays, with buses running every 15 minutes during the daytime on Sundays and every 20 minutes on Sunday evenings.

Route N4 also has an overnight service, running every 30 minutes on all nights of the week.



## Weekdays

Route no.		AM							PM											AM					
		5	6	7	8	9	10	11	12	1	2	3	4	5	6	7	8	9	10	11	12	1	2	3	4
		The number in each box below is the expected time in minutes between buses																							
N4	Blanchardstown Shopping Centre - Point Village	20	approx. every 10 minutes																	15	30	30	30	30	30
N6	Finglas - Howth Junction	20	approx. every 10 minutes																	15	-				

## Saturdays

Route no.		AM							PM											AM					
		5	6	7	8	9	10	11	12	1	2	3	4	5	6	7	8	9	10	11	12	1	2	3	4
		The number in each box below is the expected time in minutes between buses																							
N4	Blanchardstown Shopping Centre - Point Village	20	15	15	15	approx. every 10 minutes							15	15	15	15	15	30	30	30	30	30			
N6	Finglas - Howth Junction	20	15	15	15	approx. every 10 minutes							15	15	15	15	15	15	-						

## Sundays & Bank Holidays

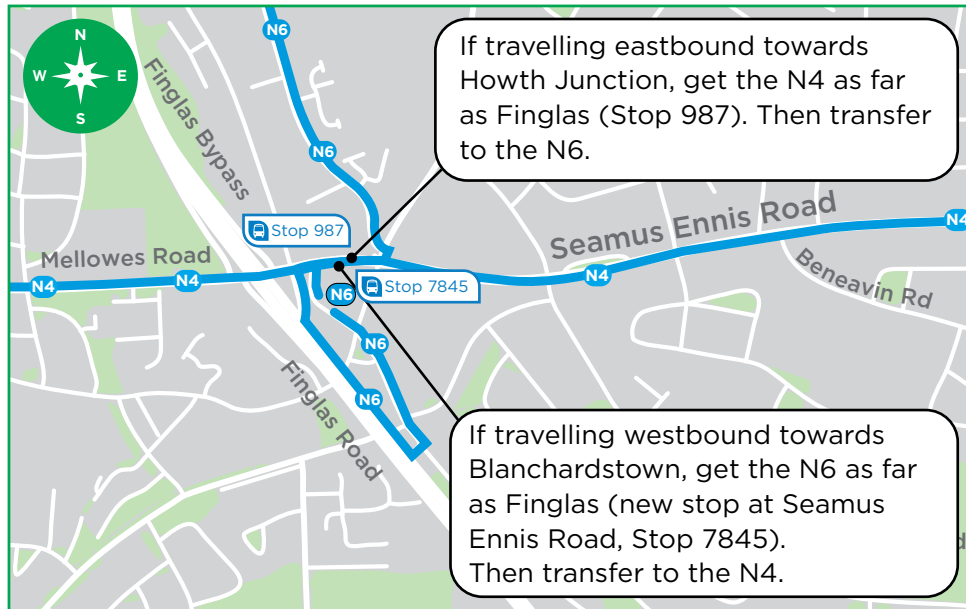
Route no.		AM							PM											AM					
		5	6	7	8	9	10	11	12	1	2	3	4	5	6	7	8	9	10	11	12	1	2	3	4
		The number in each box below is the expected time in minutes between buses																							
N4	Blanchardstown Shopping Centre - Point Village	30	30	30	20	20	approx. every 15 minutes							20	20	20	20	20	30	30	30	30			
N6	Finglas - Howth Junction	-	-	30	20	20	approx. every 15 minutes							20	20	20	20	20	30	-					



## Interchange

### Between routes N4 & N6 at Finglas

If you wish to travel between Blanchardstown and Ballymun, Santry, Beaumont, Coolock or Howth Junction, you will be able to transfer between the N4 and N6 at Finglas at no additional cost with the TFI 90 Minute Fare using your TFI Leap Card.

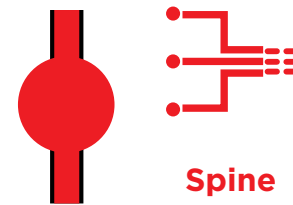


### Between route N4 & other services

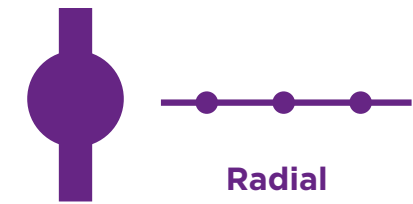
Passengers wishing to travel between Baldoyle, Kilbarrack, Raheny and DCU can transfer at Killester, between H-spine services and route N4, at no additional cost with the TFI 90 Minute Fare. Transfer between Dublin City Bus (Dublin Bus and GAI), LUAS, DART and commuter rail (zones 1 to 4 in the Short Hop Zone) is also free with the TFI 90 Minute Fare.

## New Network Route Types

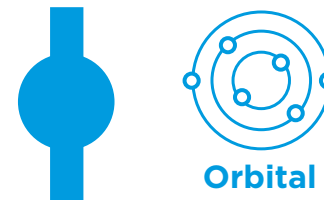
The network redesign introduces five types of route that each operate in different ways.



Spines are very frequent routes made up of individual bus services that are timetabled to work together over their common sections.



Radials are other services that operate into Dublin city centre. These services are not part of any spine and operate to their own timetable.



Orbitals provide connections between suburbs, without having to travel into the city centre.



Peak routes operate during peak travel periods, providing additional capacity along key bus corridors. Express routes are direct services from outer suburbs to the city centre during peak hours, serving limited stops to get passengers to their destination faster.



Locals provide connections to local centres and link to onward transport connections.



## Benefits of the BusConnects programme

BusConnects is the National Transport Authority's programme to greatly improve bus services in Irish cities.

It will provide additional capacity and increased frequency, especially at evenings and weekends. More 24-hour services will be introduced which will assist shift workers and support the night-time economy.

The BusConnects Network Redesign in Dublin is introducing high frequency spine and radial routes that operate into Dublin City centre, new orbital routes for faster cross-suburban trips, and new local routes to provide important connections within local areas. Peak services will provide additional capacity at the busiest travel times.



**230km** of priority bus lanes making journeys faster and more reliable



**New Bus stops and shelters** - with better signage and information



**New simplified fares system**



**New Park & Ride facilities** at key locations



**Low emissions bus fleet**



**200km** of cycle lanes/tracks



**New bus livery** providing a common style across all TFI operators

## For information on the N4 please contact: Dublin Bus:



**01 873 4222**



**customercomment@dublinbus.ie**



**www.dublinbus.ie**

## For information on the N6 please contact: Go-Ahead Ireland:



**0818 804071**



**customercomment@goaheadireland.ie**



**www.goaheadireland.ie**

The Travel Assistance Scheme is run by Dublin Bus on behalf of Transport for Ireland within the Greater Dublin Area. Its aim is to help customers use public transport on their own, especially those with disabilities and reduced mobility.

The scheme is open to all over the age of eighteen, and available on Dublin City buses (operated by Dublin Bus and Go-Ahead Ireland), Luas and DART services in the Greater Dublin Area. For further information on how to use the scheme call **(01) 703 3204** or email **travel.assist@dublinbus.ie**

**Get the apps:**



**National Journey Planner**



**Real Time Ireland**

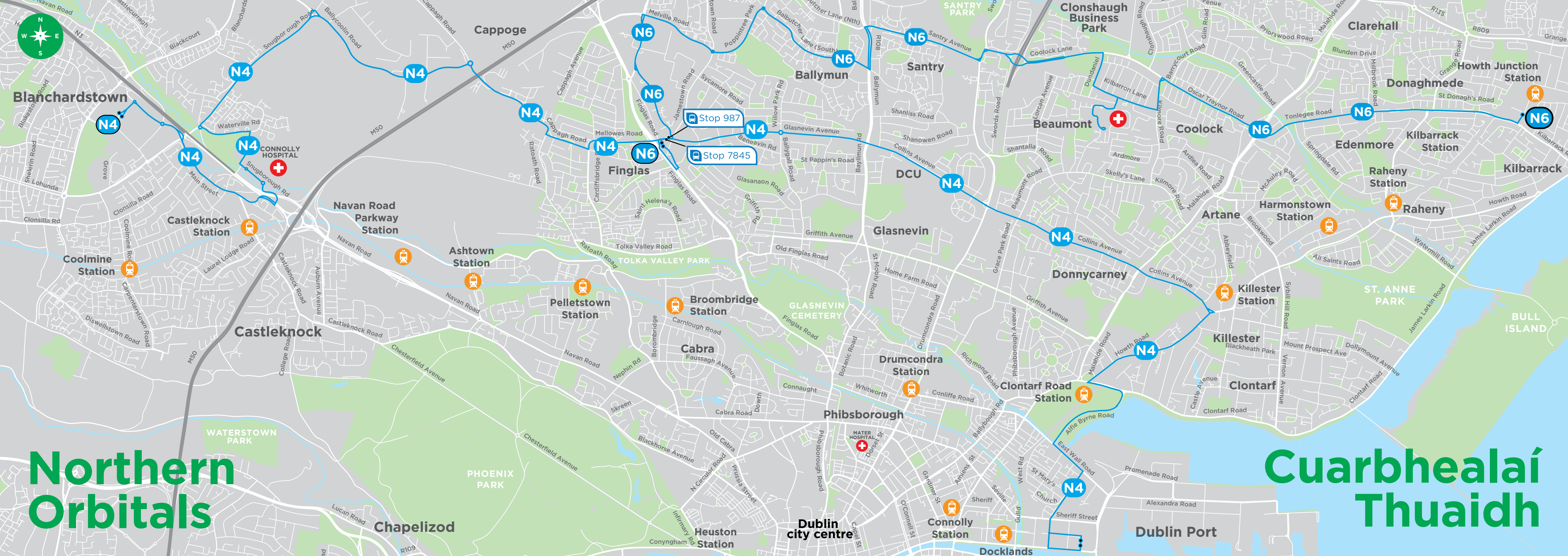


**TFI Leap Top Up**



**Driver Check**

**www.transportforireland.ie**



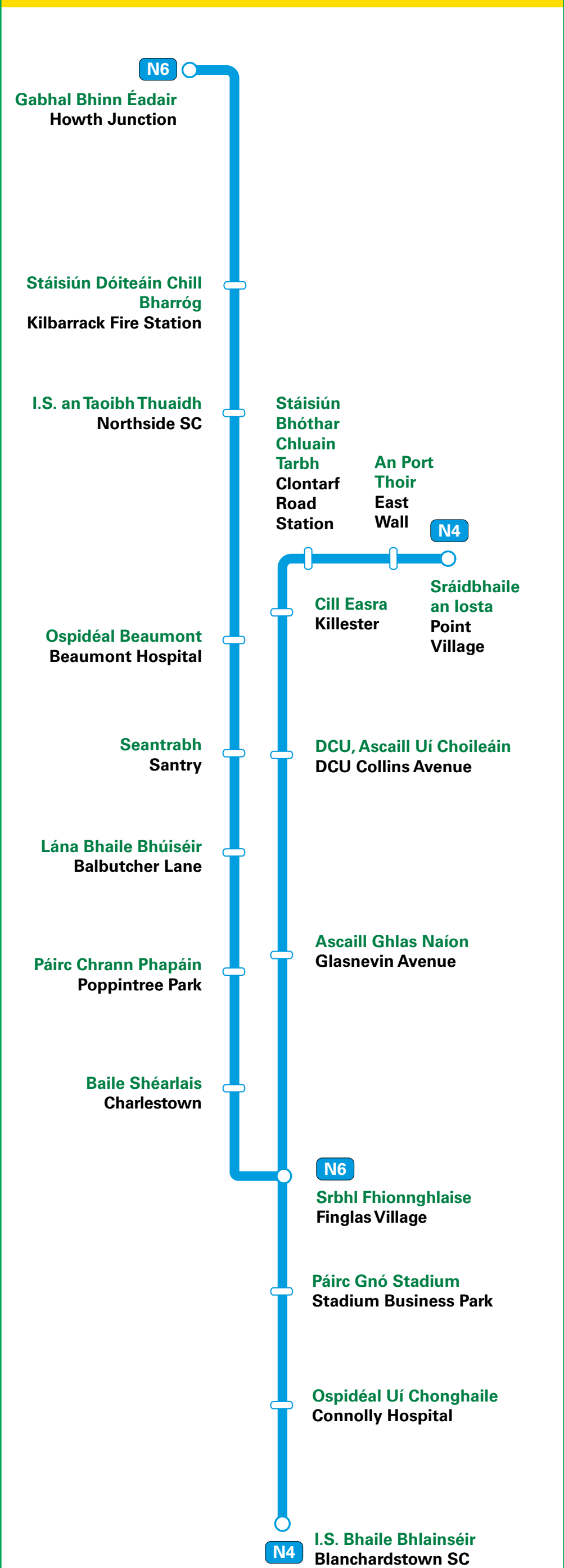
Northern  
Orbitals

Cuarbhealaí  
Thuaidh





# Northern Orbitals



 Ní thaispeántar ar léaráid an bhealaigh ach na príomhlímistéir  
Only principal areas shown on route diagram



Lá / Day	Bealach / Route	Neasmhinicíocht le linn an lae Approx day-time frequency
Laethanta le linn na seachtaine Weekdays	N4	gach 10 nóiméad / every 10 minutes
	N6	gach 10 nóiméad / every 10 minutes
An Satharn Saturday	N4	gach 10-15 nóiméad / every 10-15 minutes
	N6	gach 10-15 nóiméad / every 10-15 minutes
An Domhnach Sunday	N4	gach 15-20 nóiméad / every 15-20 minutes
	N6	gach 15-20 nóiméad / every 15-20 minutes

Chun mionsonraí a fháil faoi na stadanna uile, téigh chuig Aip Pleanálaí Turais TFI.  
For full stop details go to the TFI Journey Planner App.

