



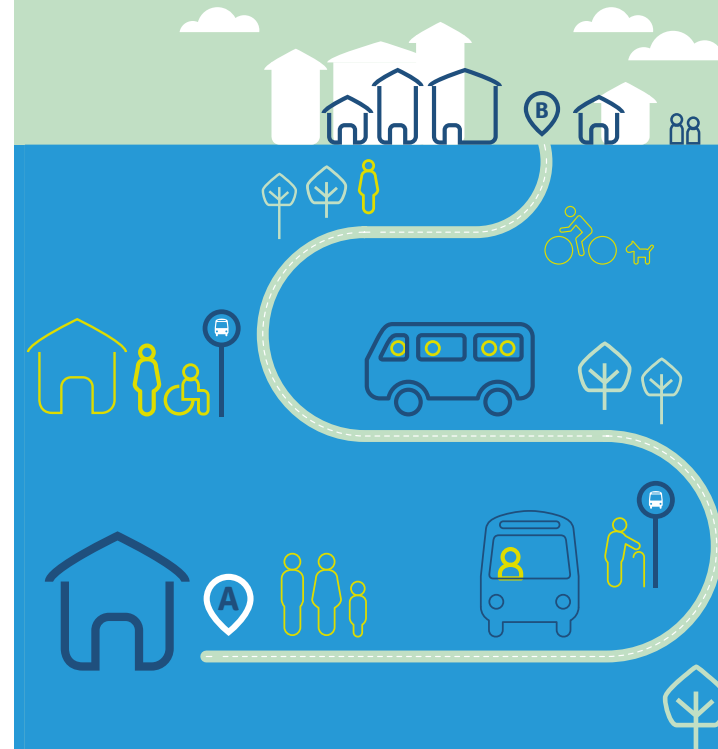
## 322 Portumna to Nenagh

Departs	Stops	Monday to Saturday				
Portumna	St Brendans Street	05:50	---	11:50	16:10	20:25
Lorrha	Opp Friars Tavern	06:05	---	12:05	16:25	20:40
Carrigahorig	The Waterfall	06:11	---	12:11	16:31	20:46
Terryglass	Opp Paddy's Bar	06:18	---	12:18	16:38	20:53
Ballinderry	Stonepark Lodge	06:25	---	12:25	16:45	21:00
Coolbawn Quay		06:32	---	12:32	16:52	21:07
Coolbawn Cross		06:35	---	12:35	16:55	21:10
Puckaun	Village Store	06:45	08:10	12:45	17:05	21:20
Dromineer	Lough Derg Cottages	06:58	08:23	12:58	17:18	21:33
Ballycommon	Community Centre	07:08	08:33	13:08	17:28	21:43
Nenagh	Revenue	07:15	08:40	13:15	17:35	21:50
Nenagh	Bamba Sq, Chapter 2	07:19	08:44	13:19	17:39	21:54
Nenagh	Train Station	07:23	08:48	13:23	17:43	21:58

Departs	Stops	Monday to Saturday				
Nenagh	Train Station	07:25	10:05	14:15	18:20	22:15
Nenagh	Bamba Sq, Credit Union	07:29	10:09	14:19	18:24	22:19
Nenagh	Opp Revenue	07:33	10:13	14:23	18:28	22:23
Ballycommon	The Thatch Cootage	07:40	10:20	14:30	18:35	22:30
Dromineer	Opp Lough Derg Cottages	07:50	10:30	14:40	18:45	22:40
Puckaun	Opp Village Store	08:03	10:43	14:53	18:58	22:53
Coolbawn Cross		---	10:50	15:00	19:05	23:00
Coolbawn Quay		---	10:53	15:03	19:08	23:03
Ballinderry	Opp Stonepark Lodge	---	11:03	15:13	19:18	23:13
Terryglass	Paddy's Bar	---	11:10	15:20	19:25	23:20
Carrigahorig	Opp The Waterfall	---	11:17	15:27	19:32	23:27
Lorrha	Friars Tavern	---	11:23	15:33	19:38	23:33
Portumna	St Brendans Street	---	11:38	15:48	19:53	23:48

## Route 322

### Portumna to Nenagh



## 322 Portumna to Nenagh

Departs	Stops	Sunday		
Portumna	St Brendans Street	08:15	12:30	16:30
Lorrha	Opp Friars Tavern	08:30	12:45	16:45
Carrigahorig	The Waterfall	08:36	12:51	16:51
Terryglass	Opp Paddy's Bar	08:43	12:58	16:58
Ballinderry	Stonepark Lodge	08:50	13:05	17:05
Coolbawn Quay		08:57	13:12	17:12
Coolbawn Cross		09:00	13:15	17:15
Puckaun	Village Store	09:10	13:25	17:25
Dromineer	Lough Derg Cottages	09:23	13:38	17:38
Ballycommon	Community Centre	09:33	13:48	17:48
Nenagh	Revenue	09:40	13:55	17:55
Nenagh	Bamba Sq, Chapter 2	09:44	13:59	17:59
Nenagh	Train Station	09:48	14:03	18:03

Departs	Stops	Sunday		
Nenagh	Train Station	10:40	14:40	18:40
Nenagh	Bamba Sq, Credit Union	10:44	14:44	18:44
Nenagh	Opp Revenue	10:48	14:48	18:48
Ballycommon	The Thatch Cootage	10:55	14:55	18:55
Dromineer	Opp Lough Derg Cottages	11:05	15:05	19:05
Puckaun	Opp Village Store	11:18	15:18	19:18
Coolbawn Cross		11:25	15:25	19:25
Coolbawn Quay		11:28	15:28	19:28
Ballinderry	Opp Stonepark Lodge	11:38	15:38	19:38
Terryglass	Paddy's Bar	11:45	15:45	19:45
Carrigahorig	Opp The Waterfall	11:52	15:52	19:52
Lorrha	Friars Tavern	11:58	15:58	19:58
Portumna	St Brendans Street	12:13	16:13	20:13

## For more information



Tel: 052-616-6140



Email: [Tipperary@locallink.ie](mailto:Tipperary@locallink.ie)  
Web: [www.locallinktipperary.ie](http://www.locallinktipperary.ie)



Operated by: TFI Local link Tipperary  
Thurles Municipal District  
Offices, Castle Avenue, Thurles, Co. Tipperary.



TFI Local Link fares include single, return, weekly, young adult and child fares. Cash is accepted and Free Travel Pass holders and children under 5 years travel for free. For more information on fares, please visit: [transportforireland.ie/fares/bus-fares](http://transportforireland.ie/fares/bus-fares) or [locallinktipperary.ie](http://locallinktipperary.ie)



Our vehicles are wheelchair accessible.



Ask your driver or other staff member for assistance.  
Full information on all available journeys and connections on National Journey Planner at [www.transportforireland.ie](http://www.transportforireland.ie)



You can use the TFI Go App or the TFI Leap Card to pay for your ticket. For further details, visit: [transportforireland.ie](http://transportforireland.ie)

Services do operate on Public Holidays  
other than Christmas Day.

Information correct at the time of print: **November 2023**

