

# For more information



Tel: **058 22076**



Email: **waterford@locallink.ie**  
Web: **www.locallinkwaterford.ie**



Operated by: **TFI Local Link Waterford,  
The Court House, T.F. Meagher St,  
Dungarvan, Co. Waterford**



Ask your driver or other  
staff member for assistance



Our vehicles are wheelchair accessible



TFI Local Link fares include single, return,  
student and child fares. Cash is accepted and  
Free Travel Pass holders and children under 5  
years travel for free.

For more information on fares, please visit:  
[transportforireland.ie/fares/bus-fares](http://transportforireland.ie/fares/bus-fares) or call  
TFI Local Link Wexford.



You can use the TFI Go app or the TFI Leap  
Card to pay for your ticket. For further details,  
visit: [transportforireland.ie](http://transportforireland.ie)



TFI Go  
app



TFI Leap  
Top-Up app

Full information on all available journeys and  
connections are on the National Journey Planner at:  
[www.transportforireland.ie](http://www.transportforireland.ie)

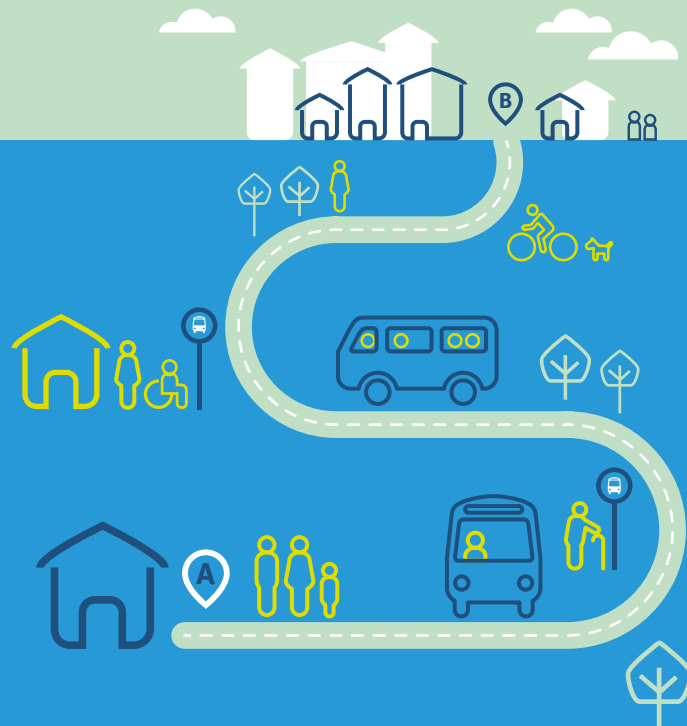
Information correct at time of print: **November 2023**



## Route

# 358

## Tramore to Waterford Clock Tower



**local link**  
Waterford



# Timetable

## 358

## Tramore to Waterford

Day: Monday - Sunday

### TRAMORE - DUNMORE EAST - PASSAGE EAST - WATERFORD CITY

Departs	Stops	Monday-Sunday			
Tramore	<i>Árd na Groí</i>	07.00	11.00	15.00	---
Tramore	<i>Clairin Wood</i>	07.02	11.02	15.02	---
Tramore	<i>Newtown Hill</i>	07.04	11.04	15.04	---
Tramore	<i>Railway Square</i>	07.09	11.09	15.09	---
Dunmore East	<i>The Park</i>	07.31	11.31	15.31	---
Dunmore East	<i>Bay Café</i>	07.34	11.34	15.34	---
Dunmore East	<i>Shanakiel</i>	07.37	11.37	15.37	---
Killea	<i>Fairways</i>	07.42	11.42	15.42	---
Woodstown	<i>Saratoga Bar</i>	07.50	11.50	15.50	---
Crooke	<i>Shop</i>	07.55	11.55	15.55	17.20
Passage East	<i>Barrack Street</i>	07.57	11.57	15.57	17.22
Waterford	<i>University Hospital</i>	08.09	12.09	16.09	17.34
Waterford	<i>Newtown Road</i>	08.16	12.16	16.16	17.41
Waterford	<i>De La Salle School</i>	08.18	12.18	16.18	17.43
Waterford	<i>Waterpark Dunmore Rd</i>	08.20	12.20	16.20	17.45
Waterford	<i>Lombard Street</i>	08.22	12.22	16.22	17.47
Waterford	<i>Clock Tower</i>	08.30	12.30	16.30	17.55

### WATERFORD CITY - PASSAGE EAST - DUNMORE EAST - TRAMORE

Departs	Stops	Monday-Sunday			
Waterford	<i>Clock Tower</i>	9.00	13.00	16.45	18.15
Waterford	<i>Lombard Street</i>	9.02	13.02	16.47	18.17
Waterford	<i>Waterpark Dunmore Rd</i>	9.04	13.04	16.49	18.19
Waterford	<i>De La Salle School</i>	9.06	13.06	16.51	18.21
Waterford	<i>Newtown Road</i>	9.08	13.08	16.53	18.23
Waterford	<i>University Hospital</i>	9.12	13.12	16.57	18.27
Passage East	<i>Barrack Street</i>	9.24	13.24	17.09	18.39
Crooke	<i>Shop</i>	9.26	13.26	17.11	18.41
Woodstown	<i>Saratoga Bar</i>	9.34	13.34	---	18.49
Killea	<i>Fairways</i>	9.39	13.39	---	18.54
Dunmore East	<i>The Park</i>	9.43	13.43	---	18.58
Dunmore East	<i>Bay Café</i>	9.47	13.47	---	19.02
Dunmore East	<i>Shanakiel</i>	9.51	13.51	---	19.06
Tramore	<i>Railway Square</i>	10.11	14.11	---	19.26
Tramore	<i>Newtown Hill</i>	10.16	14.16	---	19.31
Tramore	<i>Clairin Wood</i>	10.18	14.18	---	19.33
Tramore	<i>Árd na Groí</i>	10.20	14.20	---	19.35