

For more information



044 9340801

- 📞 tfilecallinklwr
- 📍 tfilecallinklwr
- 📱 Locallinklwr



Operated by

TFI Local Link Longford Westmeath Roscommon.
Governor's House, County Buildings Complex,
Mount Street, Mullingar, Westmeath, N91 RW52



Fares:

Children under 5 years and holders
of the Free Travel Pass, travel free of charge.



Our vehicles are wheelchair accessible



TFI Leap Card & TFI Go App can now be
used to pay when travelling on this service.



TFI Leap
Top-up App



TFI Go App



For more information on the TFI Leap Card, where to
get it and how to use it, please visit leapcard.ie
The TFI Go App allows you to buy tickets directly
from your phone and is available to download on
Apple IOS and Google Android.

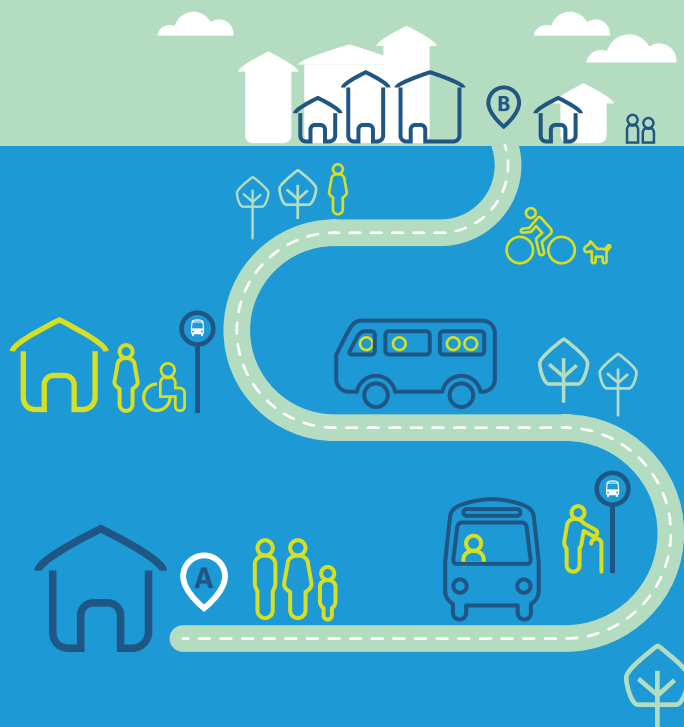
For more information
on the TFI Go app please visit transportforireland.ie
All times subject to change.

Information correct at the time of print: December 2022



Route 571

Arigna to Boyle (via Drumshanbo, Keadue)



local link

Longford Westmeath Roscommon



Timetable

571 Arigna to Boyle & Return

ARIGNA - DRUMSHANBO - KEADUE - BOYLE

Stops	Mon - Sat (Sept - Jun) / Mon - Sun (Jul & Aug)		
Arigna Mining Experience	-	12:00	16:30
Arigna (Miners Bar)	08:04	12:04	16:34
Mount Allen	08:07	12:07	16:37
Drumshanbo (Opposite Mart)	08:13	12:13	16:43
Mount Allen	08:19	12:19	16:49
Keadue	08:24	12:24	16:54
Cleen (Clancys Pub)	08:30	12:30	17:00
Knockvicar	08:33	12:33	17:03
Lough Key	08:44	12:44	17:14
Boyle (Kings House)	08:55	12:55	17:25

BOYLE - KEADUE - DRUMSHANBO - ARIGNA

Stops	Mon - Sat (Sept - Jun) / Mon - Sun (Jul & Aug)		
Boyle (Kings House)	11:00	15:30	17:30
Lough Key	11:11	15:41	17:41
Knockvicar	11:22	15:52	17:52
Cleen (Clancys Pub)	11:25	15:55	17:55
Keadue	11:31	16:01	18:01
Mount Allen	11:36	16:06	18:06
Drumshanbo (Opposite Mart)	11:42	16:12	18:12
Mount Allen	11:48	16:18	18:18
Arigna (Miners Bar)	11:51	16:21	18:21
Arigna Mining Experience	11:55	16:25	-

Connections available at Drumshanbo: Carrick On Shannon (567), Manorhamilton (567A), Carrigallen (573)



Full information on all available journeys and connections on National Journey Planner at www.transportforireland.ie