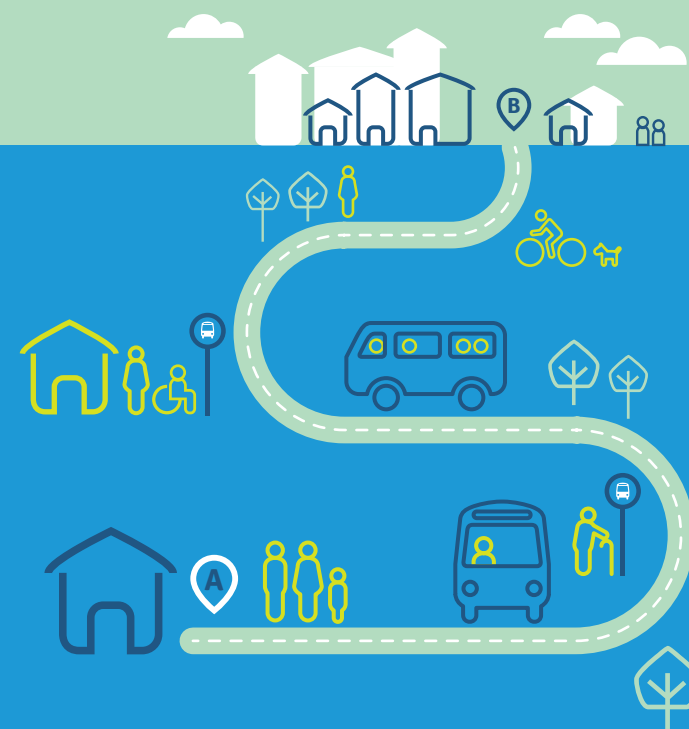


## 342 Ennis to Flagmount Via Scariff & Feakle

ENNIS - FLAGMOUNT VIA SCARIFF & FEAKLE					
Stop Name	Stop Location	Stop Number	Monday - Sunday & Public Holidays		
Ennis Station	Bus & Train Station	635341	09:45	14:30	18:15
Ennis Friars Walk	Friars Walk Bus Stop Clare Museum	10845	09:49	14:34	18:19
Corrovorrin	Near Corrovorrin Bridge (Tulla side)	12355	09:54	14:39	18:24
Knockanoura	Near Cappahard Roundabout (Ennis Side)	11813	09:55	14:40	18:25
Newpark	Near Entrance to Western Joinery	11815	09:56	14:41	18:26
An tSean Dún	Near Entrance to An tSean Dún (Tulla side)	346101	09:57	14:42	18:27
Roslevan	Near Ballymacahill Cross (Ennis side)	12354	09:58	14:43	18:28
Gort na mBláth	Near Entrance Rathbán (Tulla side)	11817	09:59	14:44	18:29
Clooney	Opposite The Church	346081	10:06	14:51	18:36
Tulla West	O'Halloran's Service Station	11818	10:15	15:00	18:45
Tulla	Library	337741	10:18	15:03	18:48
Bodyke	The Cobblers Rest	337551	10:32	15:17	19:02
Tuamgraney	Opposite Woollen Mills for LCETB	11819	10:38	15:23	19:08
Drewsborough	Opposite Brian Boru Service Station	12357	10:39	15:24	19:09
Scariff	Post Office Main Street	337971	10:43	15:28	19:13
Feakle North	Opposite Pepper's Pub, Feakle	301211	10:55	15:40	19:25
Feakle	Near Johnny Patterson Monument	11889	10:57	15:42	19:27
Digital Hub	Feakle Digital Hub/Old Creamery	11888	10:59	15:44	19:29
Flagmount	Opposite O'Mara's General Store	301121	11:13	15:58	19:43

## Route 342

### Flagmount to Ennis via Feakle & Scariff



## 342 Flagmount to Ennis Via Feakle & Scariff

FLAGMOUNT - ENNIS VIA FEAKLE & SCARIFF					
Stop Name	Stop Location	Stop Number	Monday - Sunday & Public Holidays		
Flagmount	O'Mara's General Store	11886	08:00	12:05	16:05
Feakle	Near Johnny Patterson Monument	11889	08:13	12:18	16:18
Digital Hub	Feakle Digital Hub/Old Creamery	11888	08:16	12:21	16:21
Feakle North	Pepper's Pub	346121	08:17	12:22	16:22
Scariff	The Square	337511	08:30	12:35	16:35
Drewsborough	Brian Boru Service Station Tuamgraney	11804	08:33	12:38	16:38
Tuamgraney	Woollen Mills	11805	08:34	12:39	16:39
Bodyke	Opposite The Cobblers Rest	333351	08:41	12:46	16:46
Tulla	Opposite Library	11806	08:55	13:00	17:00
Tulla West	Opposite O'Halloran's Service Station	11807	09:00	13:05	17:05
Clooney	The Church	300091	09:10	13:15	17:15
Gort na mBláth	Near Entrance Opposite Rathbán (Tulla side)	11808	09:17	13:22	17:22
Roslevan	Near Ballymacahill Cross (Ennis side)	11809	09:18	13:23	17:23
An tSean Dún	Near Entrance Opposite An tSean Dún (Tulla side)	11810	09:19	13:24	17:24
Newpark	Opposite Entrance to Western Joinery	301111	09:20	13:25	17:25
Knockanoura	Near Cappahard Roundabout (Ennis side)	12544	09:21	13:26	17:26
Corrovorrin	Near Corrovorrin Bridge (Ennis side)	12356	09:22	13:27	17:27
Ennis Friars Walk	Friars Walk Bus Stop Clare Museum	10845	09:26	13:31	17:31
Ennis Station	Bus & Train Station	635341	09:30	13:35	17:35

## For more information



Email: [limerickclare@locallinklc.ie](mailto:limerickclare@locallinklc.ie)

Limerick Tel: 069 22311

Clare Tel: 065 6719101

Online: [www.locallinklc.ie](http://www.locallinklc.ie)

 @TFILocalLinkLimerickClare



Operated by:  
1 Market Pl,  
Newcastle West,  
Co. Limerick  
V42 A898

Ennis Digital Hub,  
Quin Road Business  
Park, Quin Road,  
Ennis, Co. Clare  
V95VW74



Ask your driver or other staff member for assistance



Our vehicles are wheelchair accessible



TFI Local Link fares include single, return, student and child fares. Cash is accepted and Free Travel Pass holders and children under 5 years travel for free.

For more information on fares, please visit: [transportforireland.ie/fares/bus-fares](http://transportforireland.ie/fares/bus-fares) or call TFI Local Link Limerick Clare.



You can use the TFI Leap Card or TFI Go to pay for your ticket. For further details, visit: [transportforireland.ie](http://transportforireland.ie)



TFI Leap  
Top-Up app



TFI Go  
App

Full information on all available journeys and connections are on the National Journey Planner at: [www.transportforireland.ie](http://www.transportforireland.ie)

**Services do not operate on Christmas day**

Information correct at the time of print: **March 2025**